

# Edenton, NC RCCP Resilience Strategy

## CAT Meeting #1

October 19, 2023



## Agenda

# Agenda

1. **Introductions**
2. **Project Overview**
3. **Hazards & Stressors**
4. **Asset Identification**
5. **Public & Stakeholder Involvement Strategy**
6. **Review of Existing Planning Efforts**
7. **Next Steps**
8. **Discussion**



# Introductions



# Introductions

## Community Action Team (CAT)



EDENTON  
*North Carolina*

| Department/Agency   | Name             |
|---|------------------|
| Town Assistant Manager/Planning Director (CAT Point Person) | Dwayne Whealton  |
| Town Manager  | Corey Gooden     |
| Public Works Director                                       | David Myers      |
| Floodplain Administrator                                    | Kent Pierce      |
| Emergency Management Director                               | Cord Palmer      |
| Public Information Officer                                  | Tyler Newman     |
| Environmental Task Force                                    | Patricia Rand    |
| Environmental Task Force                                    | April Lane       |
| Environmental Task Force                                    | David Herlong    |
| Environmental Task Force                                    | Karen Mastin     |
| Environmental Task Force                                    | Larry McLaughlin |
| Environmental Task Force                                    | Alta LeCompte    |
| Environmental Task Force                                    | Susan Inglis     |
| Environmental Task Force                                    | Stephen Karl     |
| Environmental Task Force                                    | Chuck Schmieler  |
| Environmental Task Force                                    | Missy Schmieler  |

Introductions

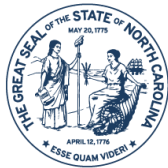
# Introductions

## Consultant Team

|                            |     |
|----------------------------|-----|
| David Stroud, CFM          | WSP |
| Abby Moore, AICP, CFM      | WSP |
| Ranger Ruffins             | WSP |
| Garrett Shields, GISP, CFM | WSP |

## Department of Coastal Management Team

|                |                               |
|----------------|-------------------------------|
| Mackenzie Todd | Coastal Resilience Specialist |
| Kasen Wally    | Coastal Resilience Specialist |



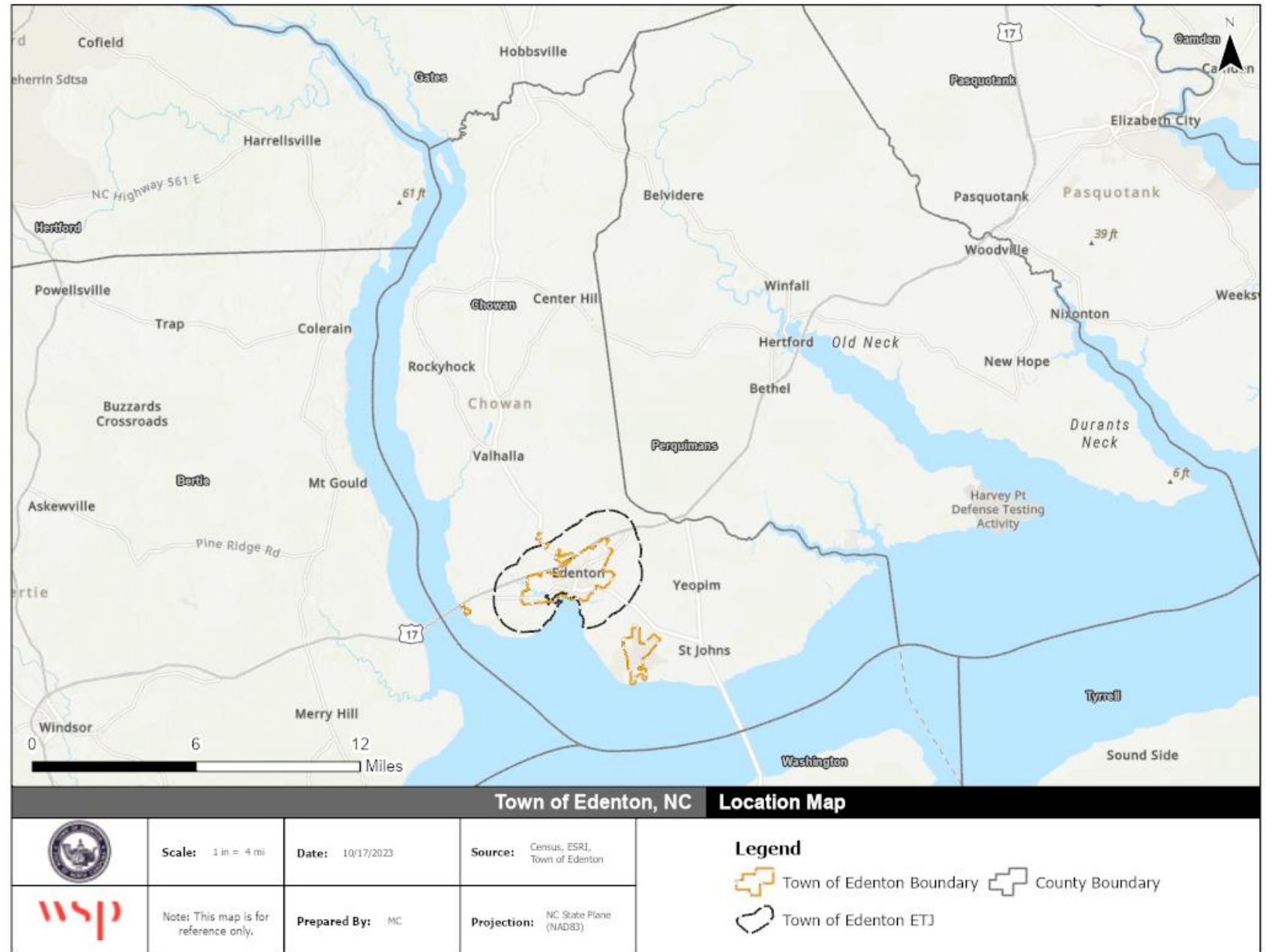
NORTH CAROLINA  
*Environmental Quality*

# Project Overview





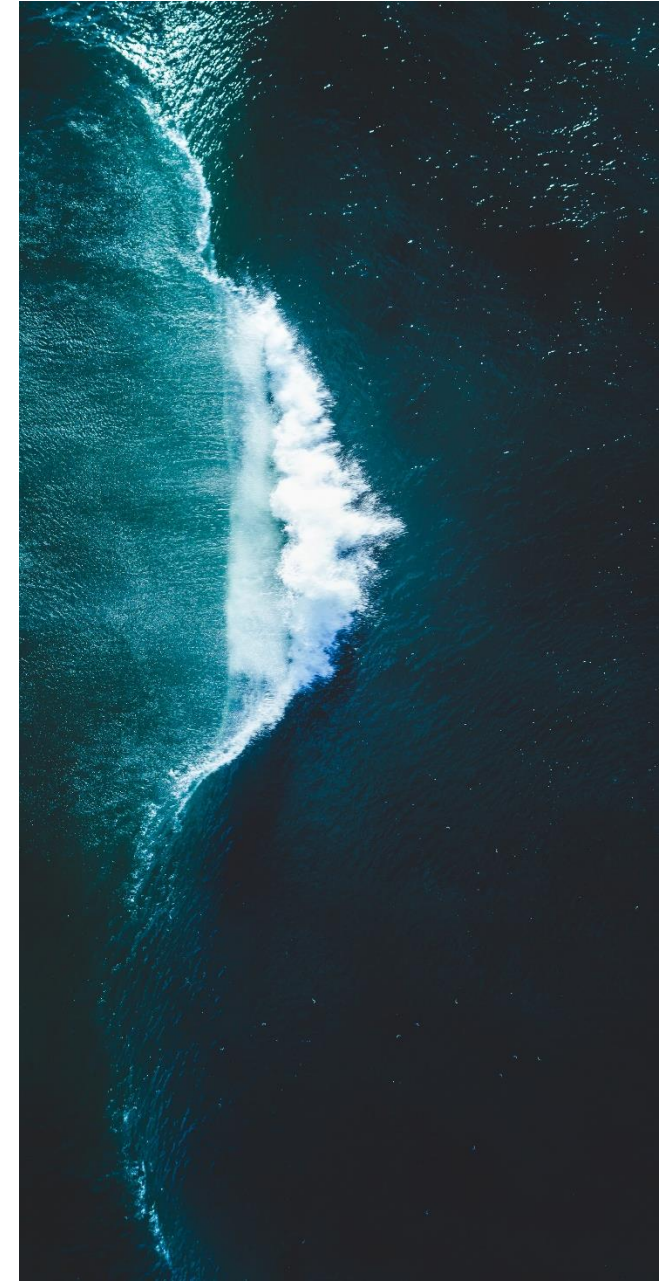
# Location Map



## Resilient Costal Communities Program

- Resilient Coastal Communities Program (RCCP) is a culmination of coastal resilience efforts in NC over several years
  - Post Hurricane Matthew, 2016 – The Resilience Evaluation and Needs Assessment (RENA) project was piloted\*
  - Post Hurricane Florence, 2018 – Division of Coastal Management (DCM) created NC Costal Community Resiliency Guide
  - Executive Order 80, *2020 Climate Risk Assessment and Resilience Plan* & Resilient Communities Program – Created RCCP and RISE

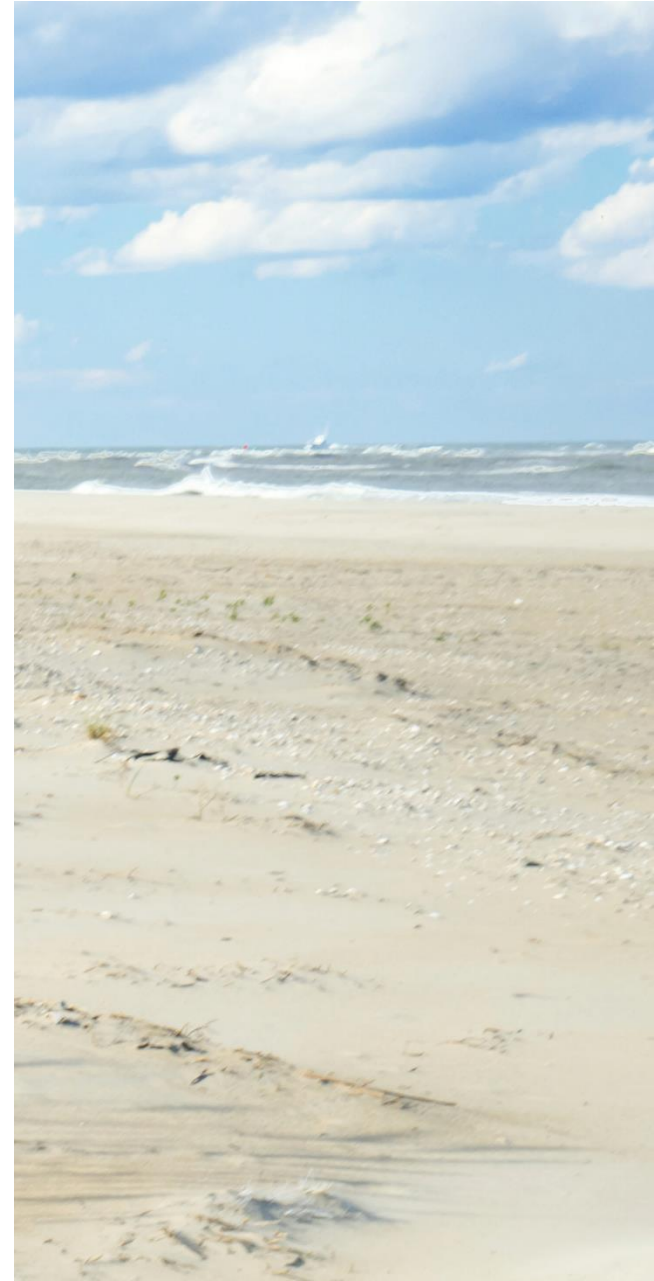
\*Edenton was a RENA Pilot community





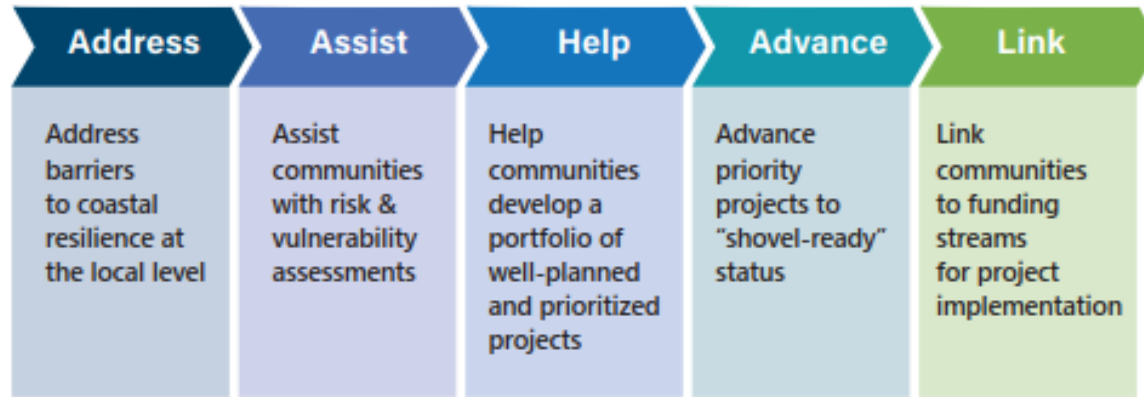
## Resilient Costal Communities Program

- Focuses locally on 20 coastal counties under the Coastal Area Management Act (CAMA)
- Funded by the State of North Carolina and the National Fish and Wildlife Foundation's Emergency Coastal Resilience Fund
- Formalized planning process that supports communities in developing shovel-ready resilience projects.



# Resilient Costal Communities Program

## Program Objectives



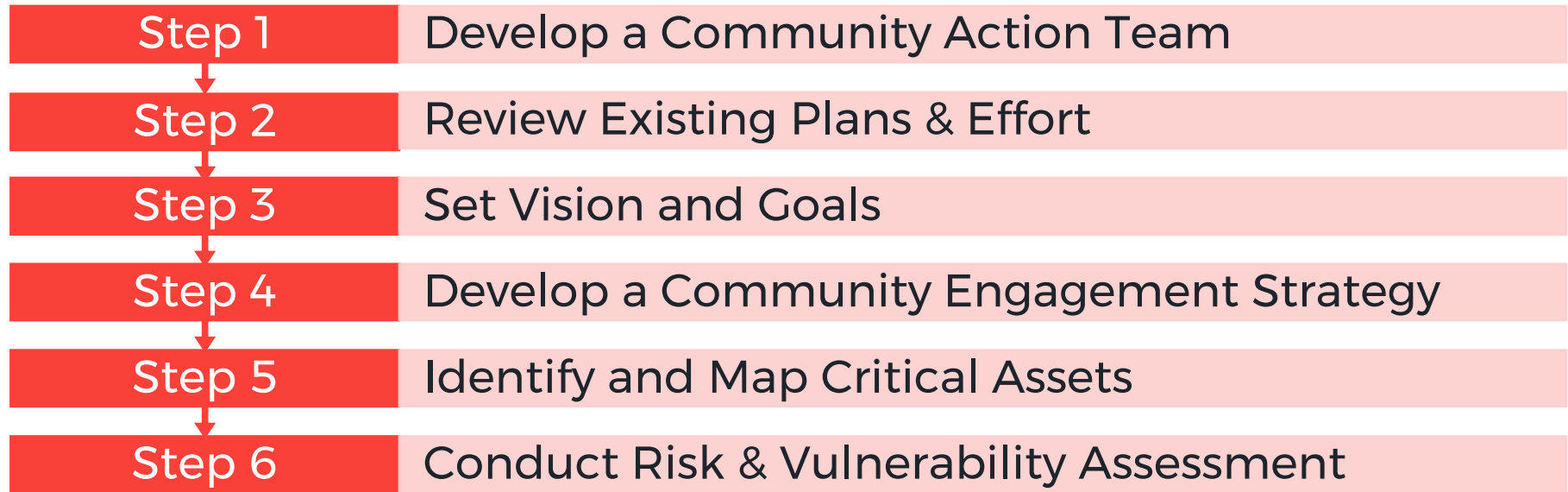
### 4 Phases Total

1. Community Engagement & Risk/Vulnerability Assessment ←
2. Planning, Project Identification, & Prioritization ←
3. Engineering & Design
4. Project Implementation

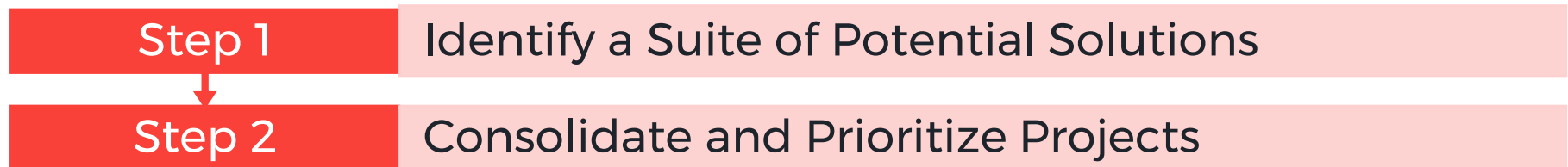
- **Phase 1:** Perform a risk and vulnerability assessment, develop a community action team, and engage with the public.
  - Deliverable: Vulnerability Assessment Report
- **Phase 2:** Develop community- and data-driven process to identify priority actions that can be taken to adapt to short- and long-term hazards.
  - Deliverable: Project Portfolio

## Scope

### Phase 1: Community Engagement & Risk/Vulnerability Assessment



### Phase 2: Planning, Project Identification, and Prioritization



## Tentative Meeting Schedule



October

### **Kickoff / Meeting 1**

Define scope, choose hazards/stressors, review preliminary hazard data, review assets, review existing planning efforts, discuss engagement strategy

January

### **Meeting 2**

Review preliminary vulnerability assessment, begin to brainstorm resilience actions, discuss goals and vision

March

### **Meeting 3**

Review final draft vulnerability assessment, discuss outcomes and recommendations, prioritization criteria for resilience actions, narrow down resilience actions

April

### **Meeting 4**

Review final draft report

# Hazards & Stressors





# Hazards & Stressors

## Potential Hazards

- Sea level rise
  - Other tidal flooding?
    - King Tides
- Flooding
  - Riverine
  - Local/Stormwater
- Storm surge
- Shoreline erosion
  - *Identify specific problem areas*

## Non-Climate Stressors

- Aging infrastructure
- Population dynamics
- Economic shifts
- Altered drainage patterns
- Land cover change (redevelopment/new development)

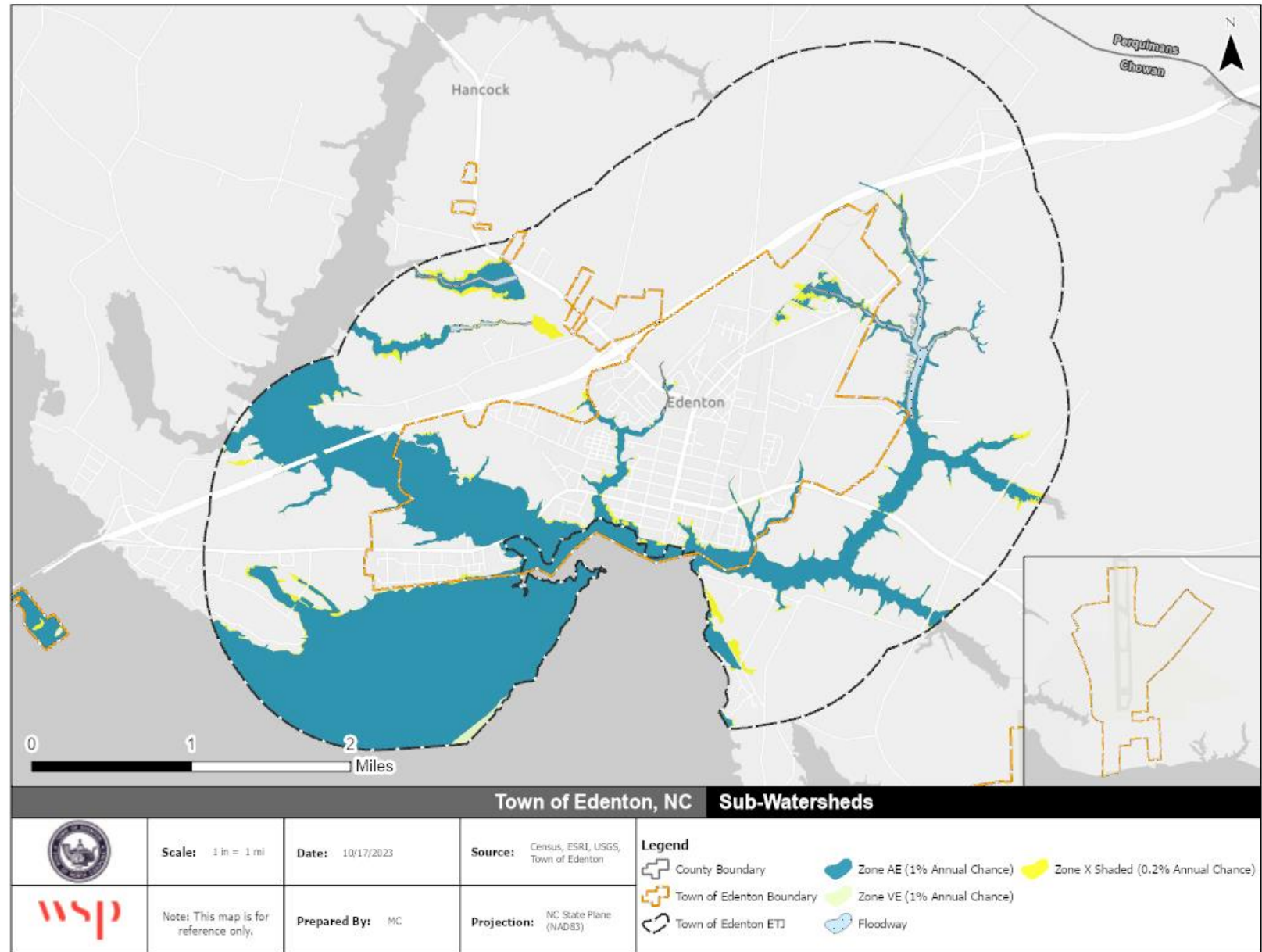


**Any additional hazards or stressors that should be assessed?**

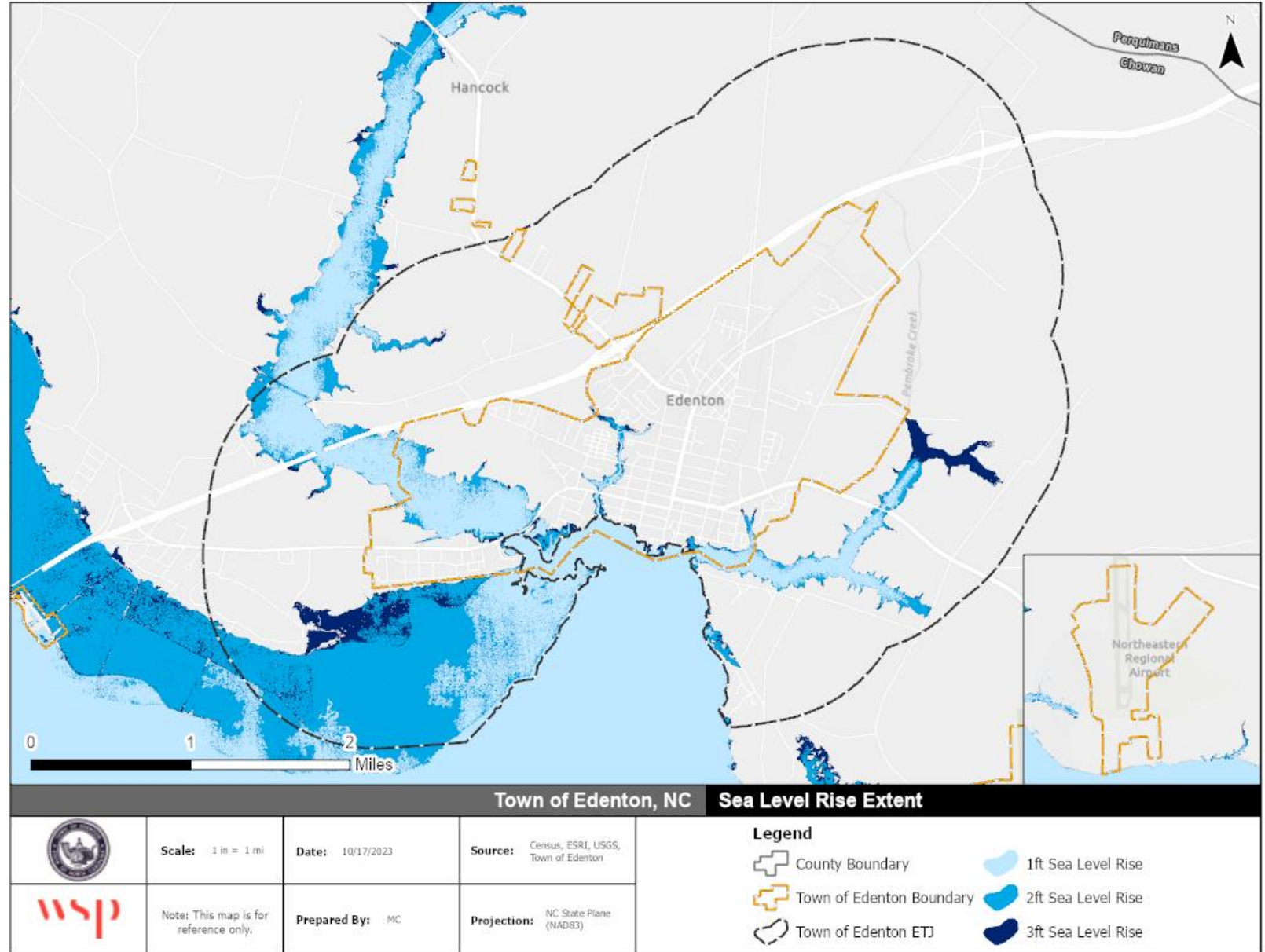
## Hazards &amp; Stressors

# Flooding

- Riverine
- Localized and Stormwater
  - Will need to identify problem areas

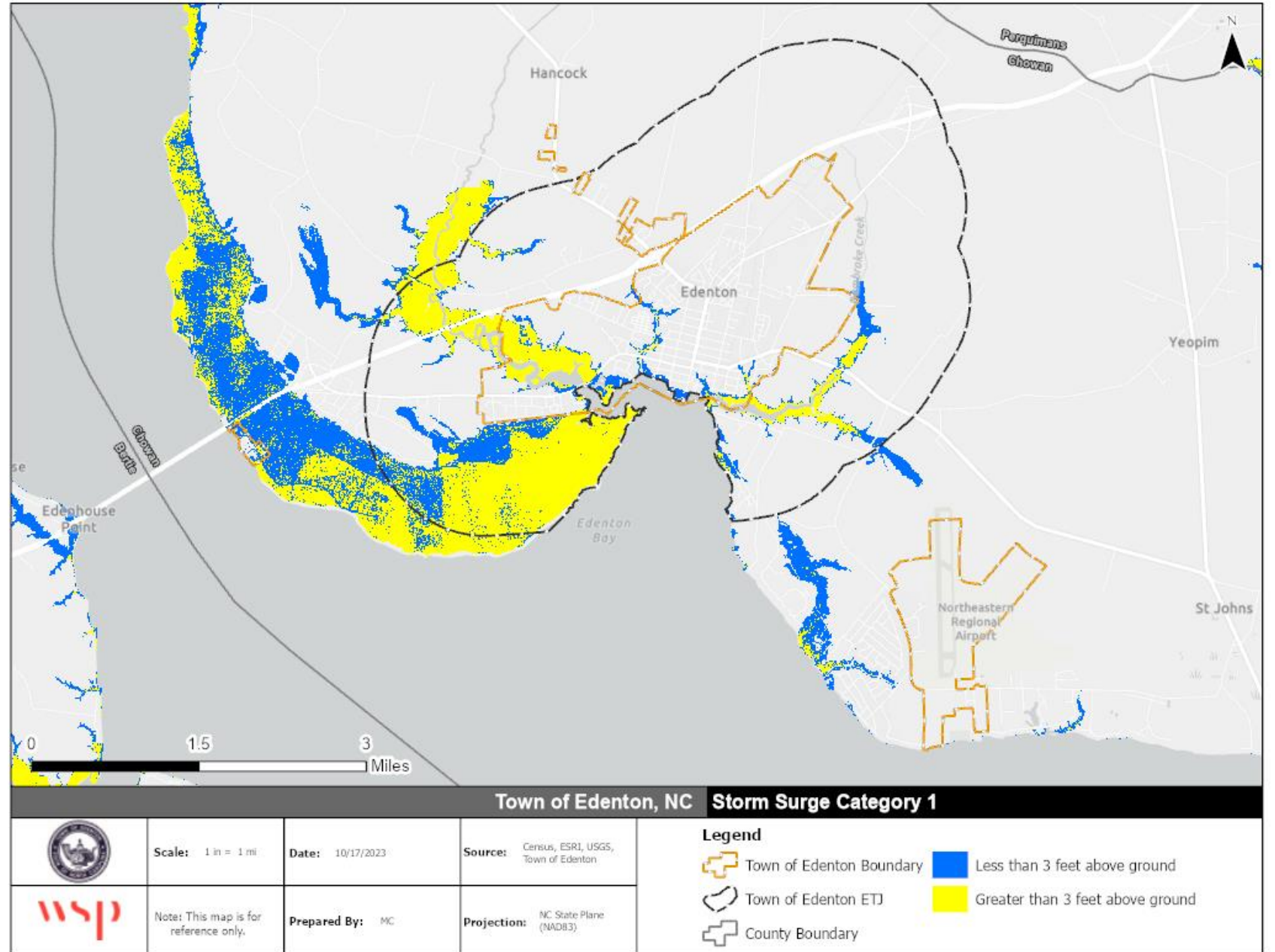


# Sea Level Rise

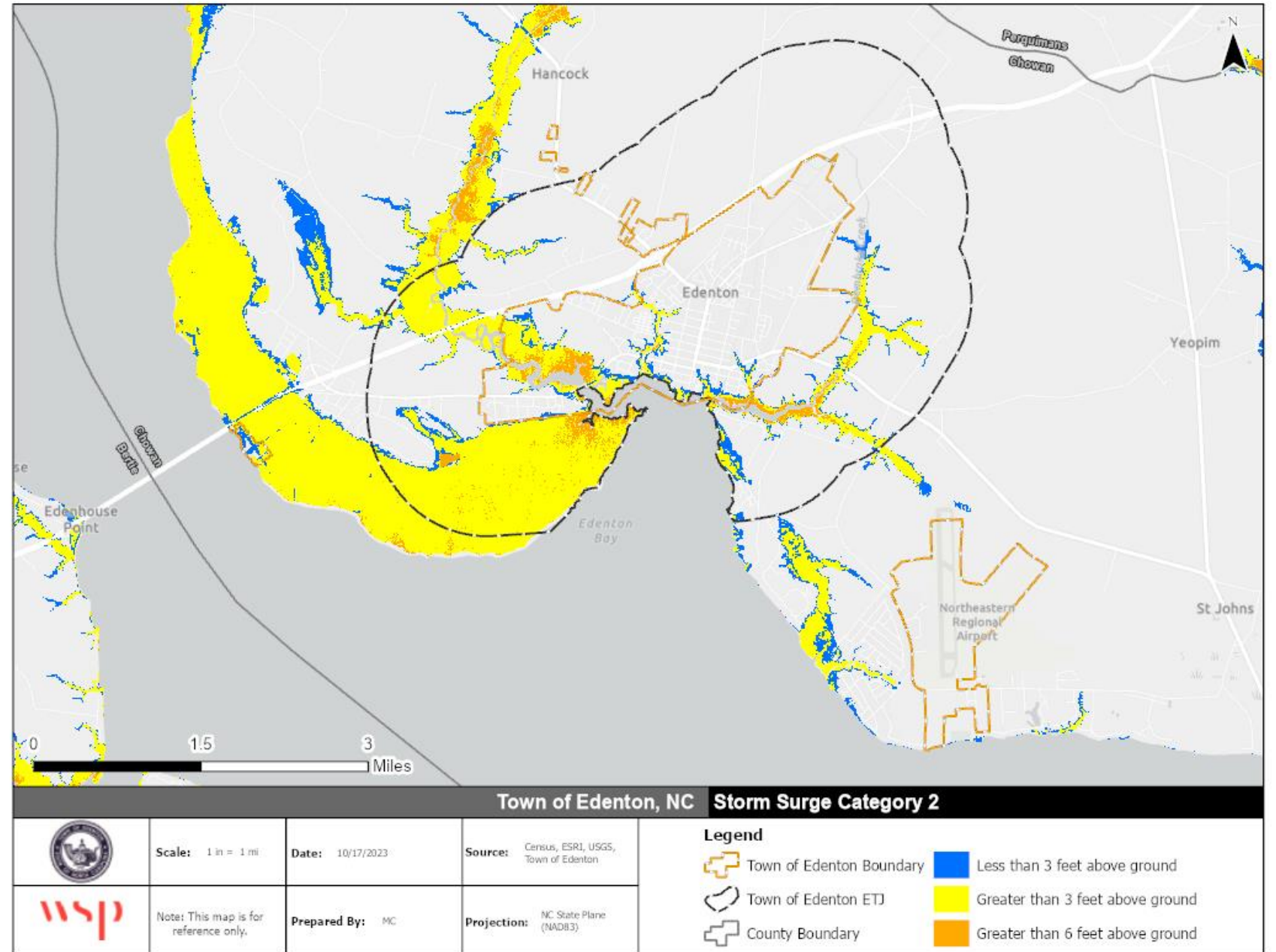




# Storm Surge CAT 1

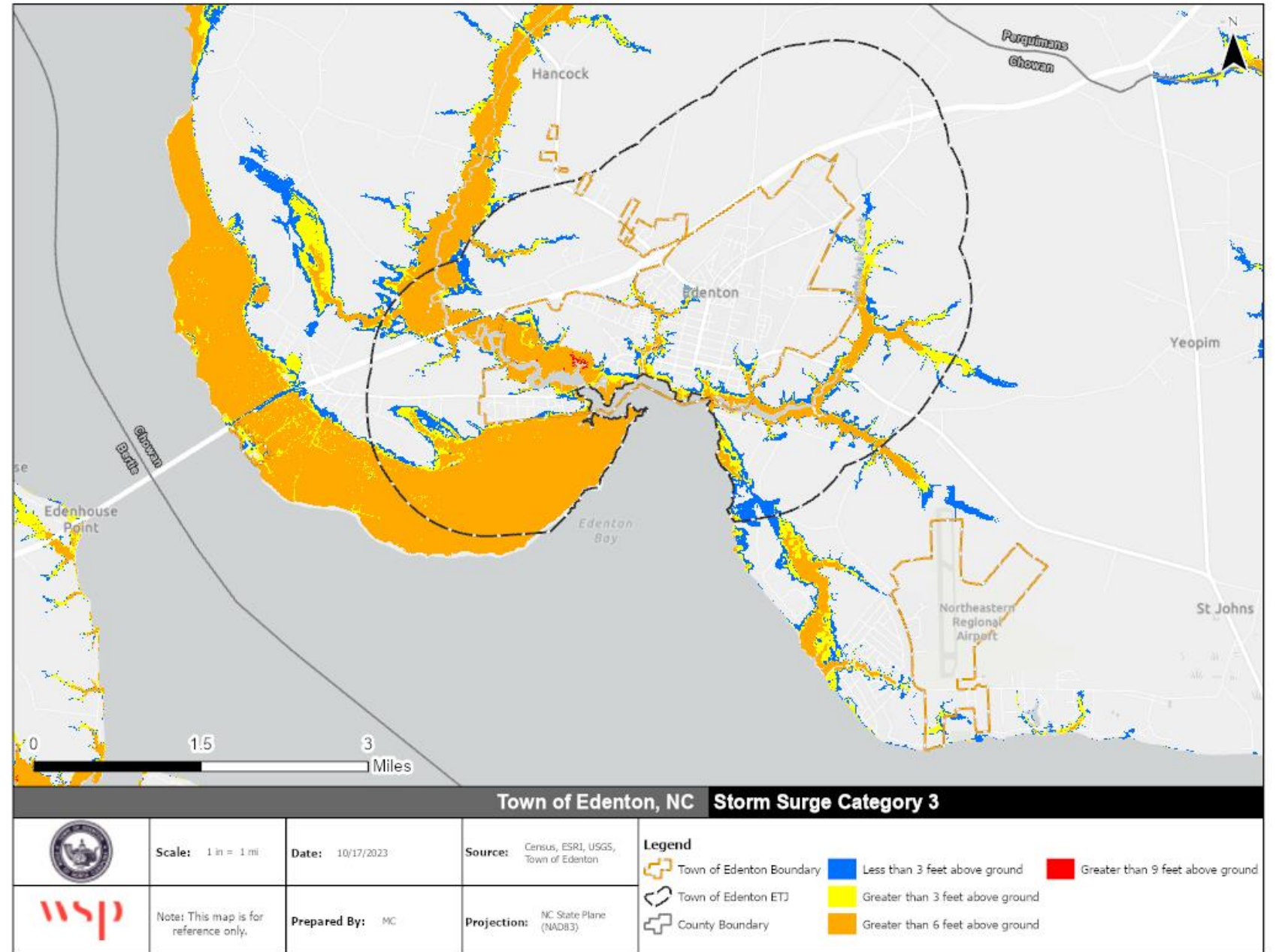


# Storm Surge CAT 2

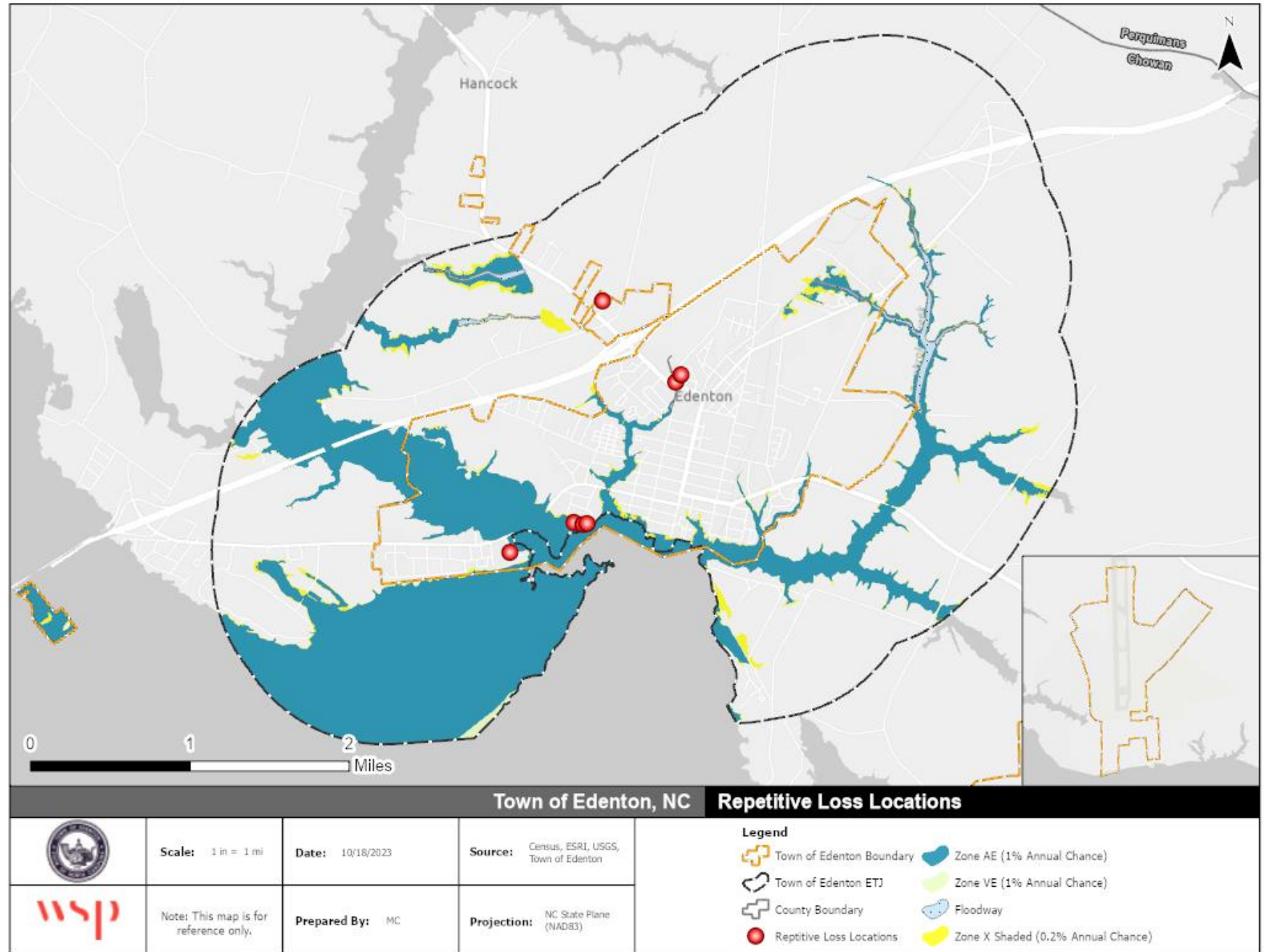




# Storm Surge CAT 3



# Repetitive Loss Areas



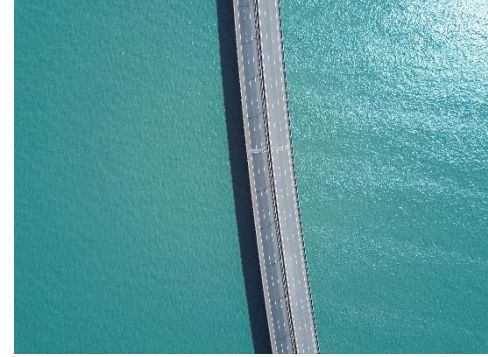
# Asset Identification





## Critical Assets, Natural Assets, and Social Vulnerability

- Critical assets
  - Roads/Evacuation routes
  - Water & sewer lines
  - Water/sewer treatment facilities
  - Community government service offices
  - Schools
  - Health services
  - Public safety or emergency services (police, fire, etc.)
  - Historic and cultural properties, districts, key community resources
- Natural assets
  - Natural areas (wetlands, forests, protected areas)
  - Open space
  - Watersheds
- Social Vulnerability – CDC SVI data and themes
  - **Any particularly vulnerable groups?**



# Public & Stakeholder Involvement Strategy





## Public & Stakeholder Involvement

- **Meetings:**

- Kickoff Meetings: CAT Meeting 1 – *project kickoff and hazard and asset identification*
  - Public Meeting 1 – *project overview and hazard and asset identification*
- CAT Meeting 2 – *goal setting and preliminary vulnerability assessment review*
- CAT Meeting 3 – *finalize vulnerability and brainstorm resilience strategies*
- Final Meetings: CAT Meeting 4 – *resilience strategy selection & prioritization*
  - Public Meeting 2 – *review draft plan, resilience strategy selection & prioritization*

- **Outreach/Engagement:**

- Public Survey
  - hard copy (locations?)
  - online
- Information flyer
- Website/Social media
- Workshops (public and committee) Interactive
- Other methods?

Edenton Resilience Strategy Public  
Survey



## Public & Stakeholder Involvement

- **Additional Stakeholders to Involve**
  - Albemarle Regional Health Services
  - Edenton-Chowan Chamber of Commerce
  - Edenton-Chowan Food Pantry
  - Edenton National Fish Hatchery
  - Roots of Edenton (resident blog)
  - Chowan-Perquimans Habitat for Humanity
  - Edenton House
  - Chowan Senior Center
  - College of The Albemarle (Edenton-Chowan Campus)
  - Others? (churches, community groups)
- **Additional Outreach/Engagement**
  - Directly invite to public meetings
  - Share planning updates
  - Post flyers in frequented spaces

**Any additional organizations, community groups, specific churches, or stakeholders, you would like to target for additional outreach?**

Please provide any contact information you have for additional stakeholders

# Existing Planning Efforts



## Review of Existing Planning Efforts

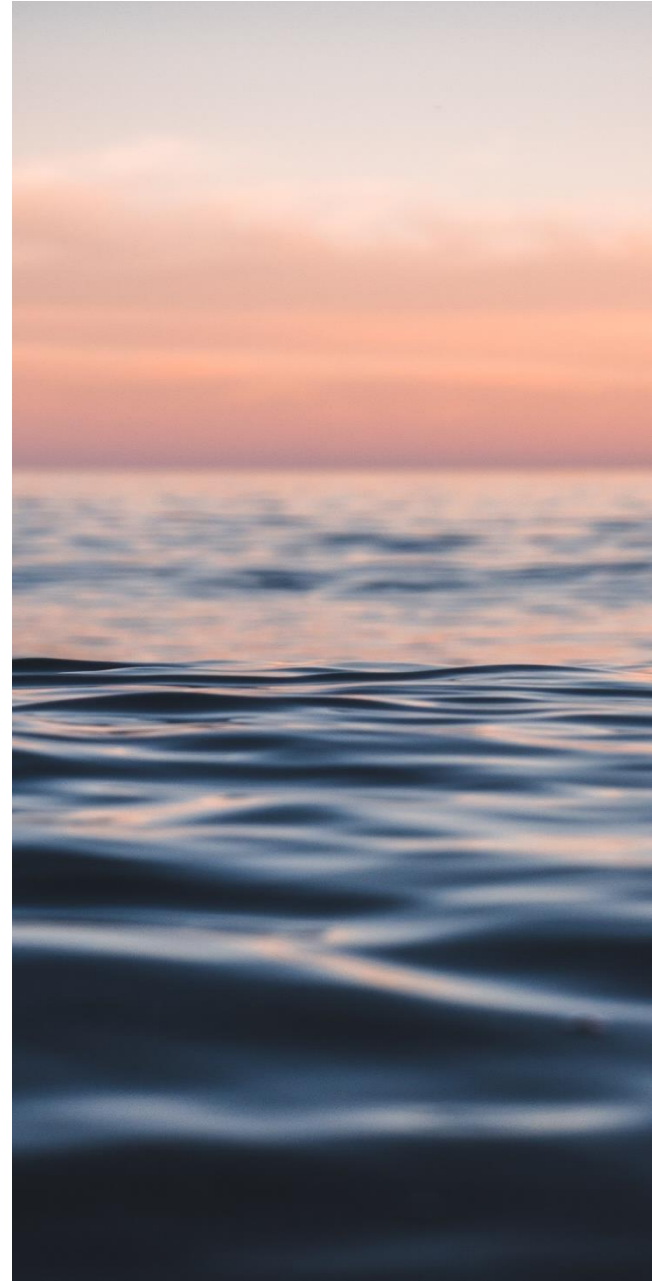
- Chowan-Edenton Land Use Plan, 2018
- Capital Improvement Plan
- Code of Ordinances
- Unified Development Ordinance
- Chowan County & Edenton Greenways and Open Space Plan, 2003
- North Oakum Street Redevelopment Plan, 2015
- Moseley Street Redevelopment Plan, 2015
- Edenton-Chowan CAMA Land Use Plan, 2018
- Albemarle Regional Hazard Mitigation Plan, 2020
- Edenton 2030 Vision Statement

**Any additional plans we should review? Additional programs we should be aware of?**

## Next Steps

## Next Steps

- Schedule first public meeting for November
- Publicize public survey
  - Social media
  - Website
- Finalize asset inventory
  - Collect any remaining data
  - Comments due by Nov 3<sup>rd</sup>
- Schedule next Committee meeting







# Questions?



[wsp.com](http://wsp.com)